



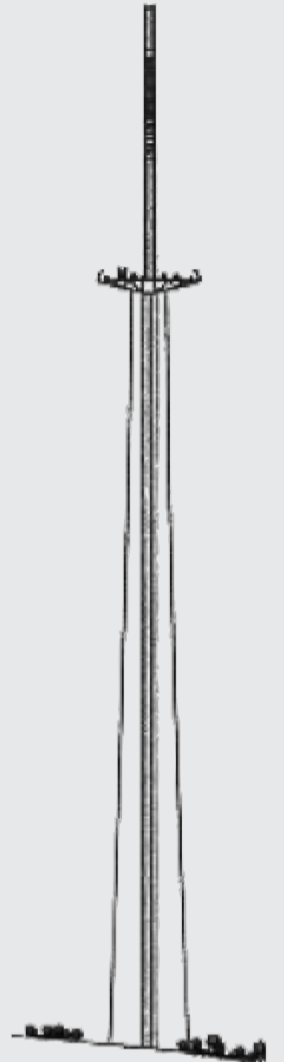
Structural Protection Systems

Millau Viaduct

Motorway A75 in France / crossing of the river Tarn valley

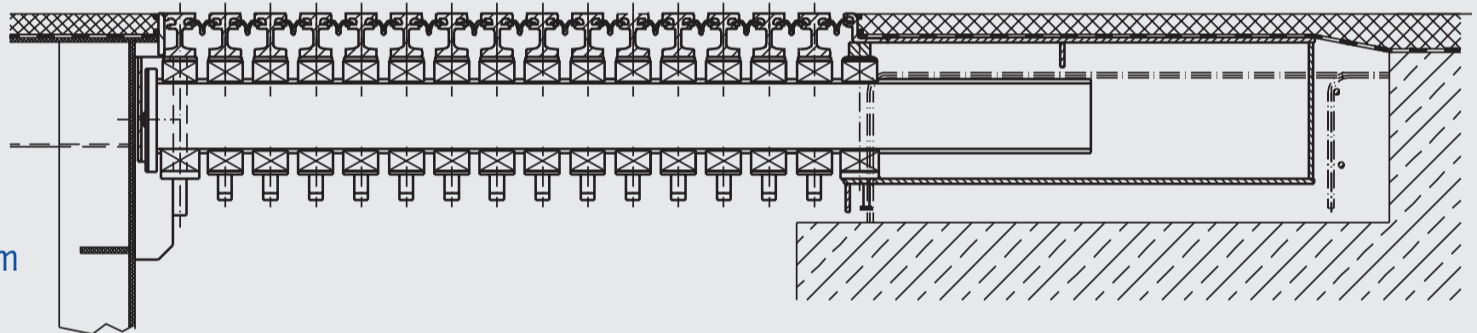


photo: EIFFAGE TP



MAURER Expansion joints:

2 Swivel Joist Expansion Joints
type DS1040 respectively DS1200
movements:
transverse ± 50 mm /
longitudinal ± 520 mm, resp. ± 600 mm



MAURER Launching devices:

64 synchronically controlled MSM[®] launching devices to forward the two parts of the superstructure from the abutments with a step size of 600 mm into their final position



photo: EIFFAGE TP

MAURER Bearing system:

32 MSM[®] and CM1 spherical bearings, vertical load = 120,000kN each, equipped with a special sliding material



Maurer Söhne Head Office
Frankfurter Ring 193, D-80807 München
P.O. Box 44 01 45, D-80750 München
Phone: ++49/89/32394-0
Fax: ++49/89/32394-306
eMail: ba@mchn.maurer-soehne.de
Internet: www.maurer-soehne.de

Maurer Söhne Main Branch Office
Zum Holzplatz 2, D-44536 Lünen
Postfach 63 40, D-44520 Lünen
Phone: ++49/231/43401-0
Fax: ++49/231/43401-11

Maurer Söhne Subsidiary Plant
Kamenzer Str. 4-6, D-02994 Bernsdorf
Postfach 55, D-02992 Bernsdorf
Phone: ++49/35723/237-0
Fax: ++49/35723/237-20

MAURER SÖHNE
Innovations in steel



Since 1876